

Install Guide

IXDATA Database



Forewords

This install guide is for Customs Manager (CM) and may contain shortened keywords, which can be found in the Glossary at the back of this guide.

The Customs Manager software is provided by 'Impatex Freight Software Ltd' on the terms laid out within the contract signed at the beginning of the rental.

Customs Manager installer contains all the client-end applications and supporting files for Import, Export, CFSP, IPR, OPR, Intrastat, ERTS/Agents Inventory, Bonded/Non-Bonded Warehousing, Tariff Classification, HCI and CMTTools. Although your rental agreement may state you're only enabled access to certain parts of Customs Manager, all are installed as standard practice.

Before continuing with this installation guide for Customs Manager, please ensure you have installed the database and know of its location, as this is a requirement for the software to operate.

There is no option for an unattended installation, if the installation file is ran within a BAT file or from the CMD Prompt the installer will load as normal, requesting user interaction to complete.

System Requirements

LAN Workstation (min):

Dual Core Processor
2Gb RAM and 64Mb video card
5Gb of free hard disk space
100/1000 Network Card
Windows 2000, XP, Vista or Windows 7

LAN Server (min):

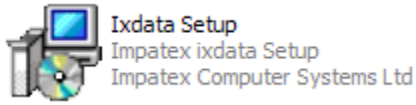
Quad Core / Dual Core Xeon
4Gb RAM
50Gb of free hard disk space (pref. SCSI or SATA) with RAID 1/5/10 Data backup device
100/1000 network card
Windows 2003 SP3

Terminal Server (min):

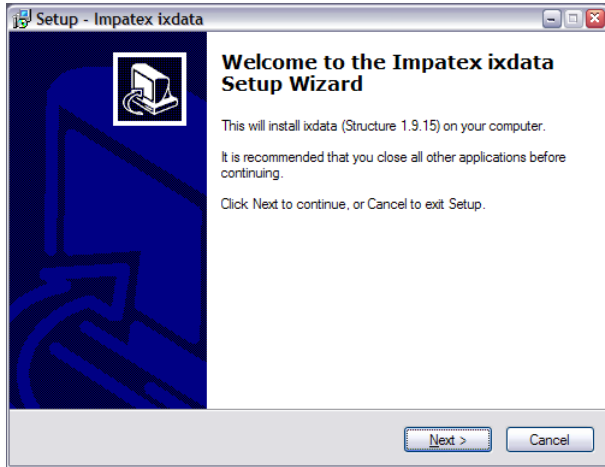
Quad Core Xeon
4Gb RAM + 128Mb RAM per user
80Gb of free hard disk space (pref. SCSI or SATA) with RAID 1/5/10 Data backup device
100/1000 network card
Windows 2003 SP3 or above with or without Citrix

Installing IXDATA Database

1. Locate the IXData Installer and run.



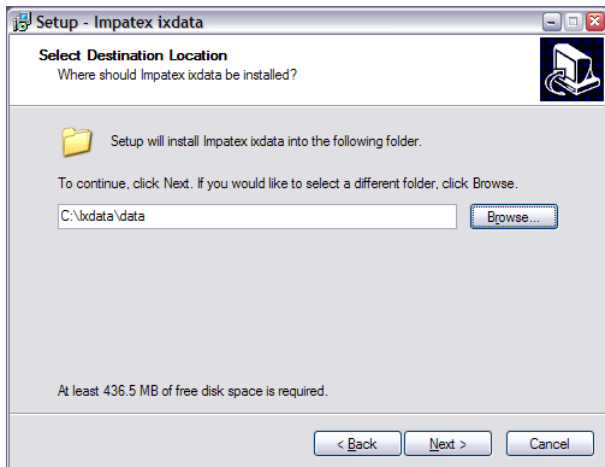
2. You'll have the following installer page appear.



Click the 'Next >' to continue with installation of the IXData Database.

* Please note that the "Structure" may be different, higher values indicate a newer version.

3. Here you can choose where to install the database.

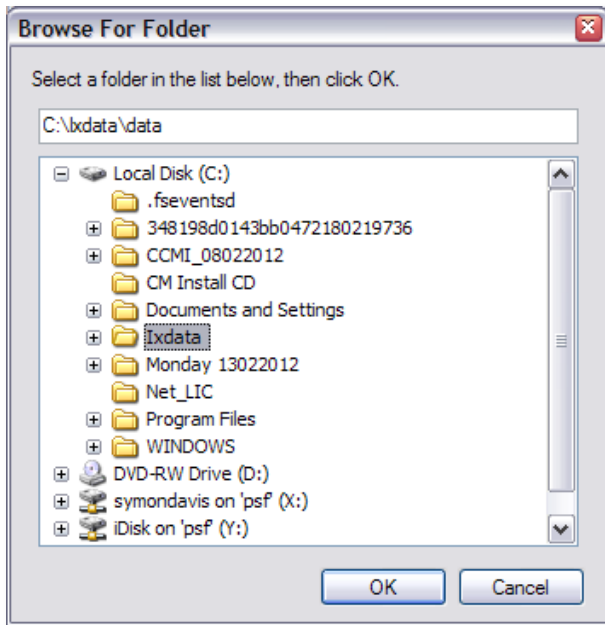


If the default location is correct for your installation or you typed in your new path to install the IXData Database then click the 'Next >' button and proceed to part 4.

Otherwise, click the 'Browse' button and continue with part 3b.

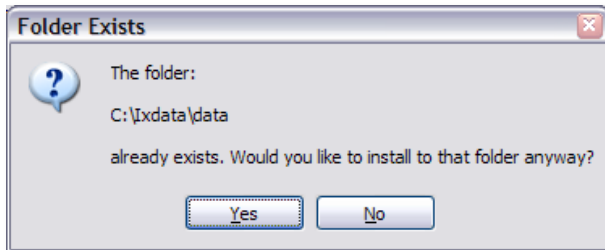
Installing IXDATA Database Continued...

- 3b. Now you can click through to the path where you would like IXData Database to be stored.



Once your new location has been selected, click the 'OK' button to continue.

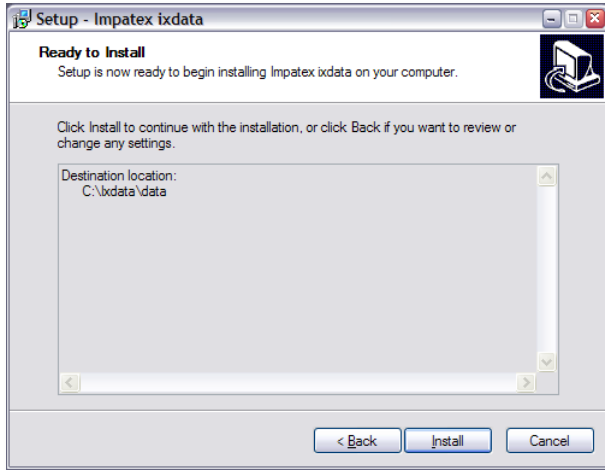
4. Should you already have a previous installation, you will receive the following message.



If you are still certain to install in the location then click 'Yes' otherwise clicking 'No' will take you back to part 3.

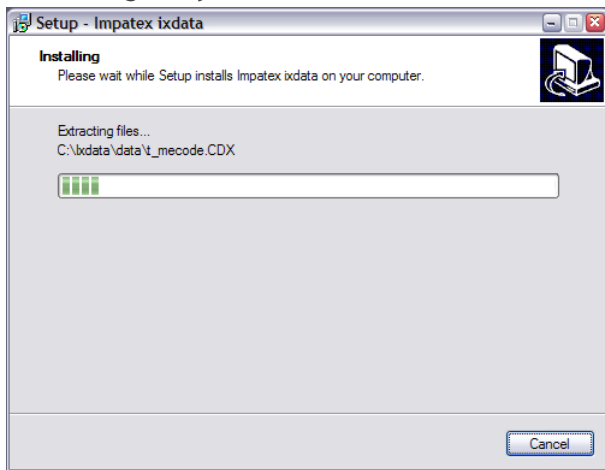
Installing IXDATA Database

5. The next page on the installer will allow you to review your requirements before proceeding.



If the requirements are correct then click 'Install' otherwise click '< Back' and adjust.

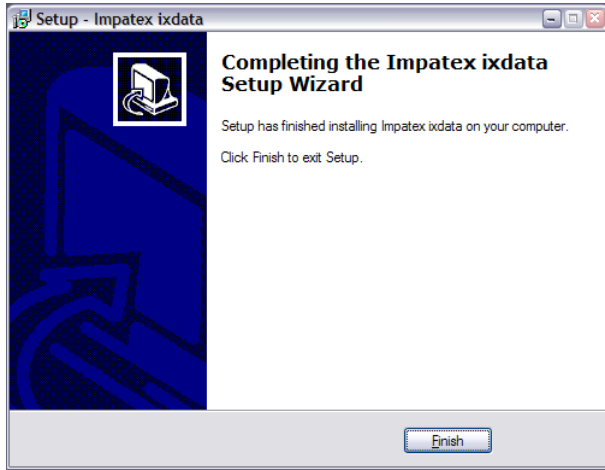
6. This stage may take a few minute's.



All IXData Database files will be unpacked and placed into the directory specified.

Installing IXDATA Database

7. Once all IXData Database files are installed you will be notified with the following screen.



From here click the 'Finish' button to quit the installer.

Glossary

In this document there may be shortened keyword terms, if this is the case then please make yourself familiar with the terms below to help you get this most out of this guide.

'Impatex Freight Software Ltd' support staff and programmers also know of these terms.

- | | |
|--|--|
| IXData | - Customs Manager Database |
| CFSP (Customs freight Simplified Procedures) | - The app for this guide is Visual CFSP (su.exe) |
| Import (SAD-H, C21, SFD & WRD) | - The app for this guide is Visual Broker (cl.exe) |
| Export (SAD-H, C21 & PSA) | - The app for this guide is Visual NES (ns.exe) |
| IPR (Inward Processing Relief) | - The app for this guide is Visual IPR (ip.exe) |
| OPR (Outward Processing Relief) | - The app for this guide is Visual OPR (op.exe) |
| Intrastat | - The app for this guide is Visual Intrastat (in.exe) |
| ERT/Agent Inventory | - This facility is within Visual Broker |
| Bonded/Non-Bonded Warehousing | - This facility is covered by the CPC use in all apps |
| Tariff Classification | - The app for this guide is Visual Classifier (tf.exe) |
| HCI (Human Computer Interface) | - The app for this guide is Visual HCI (VisualHCI.exe) |
| CMTTools (Customs Manager Tools) | - The app for this guide is CMTTools (CMTTools.exe) |
| Processor, Dual/Quad Core & Xeon | - Various types of CPU specifications |
| Mb & Gb | - Megabyte & Gigabyte, term for storage/capacity |
| 100/1000 | - Used to specify speed and theoretical transfer rate |
| SCSI (Small Computer System Interface) | - Ultra-fast, high-power communications bus for storage |
| SATA (Serial Advanced Technology Attachment) | - A type of connection for hard drives |
| RAID (Redundant Array of Independent Disks) | - When many drives connected to work together, the numbers specify what type of RAID system is in use. |